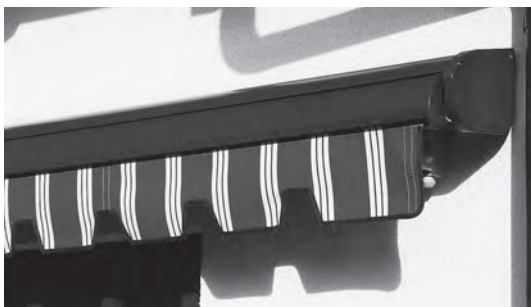


SELECT S8130

Folding arm awning with mounting bar

S8130



	min. 170 cm max. 1800 cm*		min. 140 cm max. 350 cm
--	------------------------------	--	----------------------------

	0°–60° wall fixing 0°–60° top fixing 0°–60° rafter installation
--	---

* more than 600 cm TW only possible with a motor

Minimal width for a given projection

Projection	minimal width	
	2 Arms	4 Arms
140 cm	170	335
150 cm	180	355
160 cm	190	375
180 cm	210	415
200 cm	230	455
225 cm	260	507
250 cm	290	575
275 cm	320	640
300 cm	350	705
325 cm	380	765
350 cm	400	805

Description

Folding arm awning with operating handle. Fabric cover. Retraction and extension with detachable operating handle. Bevel gearbox with gearbox reduction 4,6:1 and integrated end stop. Roller tube made of galvanised steel with groove for the cover fixation. Continuous triangular steel mounting bar, protected against corrosion, powder coated, to hold the arm fixations, roller tube support, brackets, bearing for gearbox and opposite side. Front rail made of extruded multiple chamber aluminium profile with rainwater nose, grooves for the cover and the valance and fixation groove for the folding arms, with end caps. Folding arms made of extruded aluminium profiles, with precision joints made of aluminium casting. Integrated spring and double stainless steel cables, cable protection over the middle joint. Arm supports made of aluminium casting with integrated knock-up security. Fall adjustment by octagonal screw from horizontal up to max. 60°. Installation brackets made of dye cast alloy for wall or top fixing (option: brackets for rafters). Total width more than 601 cm: according to the fall adjustable roller tube support made of aluminium casting with plastic rolls and continuous roller tube band. Operating handle powder coated matching the standard colours, with hook and plastic handle.

Option electric drive: Tubular AC motor 230 V/50 Hz with friction brake and electronic end stop. Thermal protection. Protection class IP54 (splash water), with 50–150 cm 4-pole connection cable.

Option top board: the top board made of extruded aluminium profile is fixed to the mounting bar and protects the awning against environmental influences.

METHOD OF DELIVERY

Awnings completely assembled, with cover.
Awnings of more than 900cm width prepared to link.

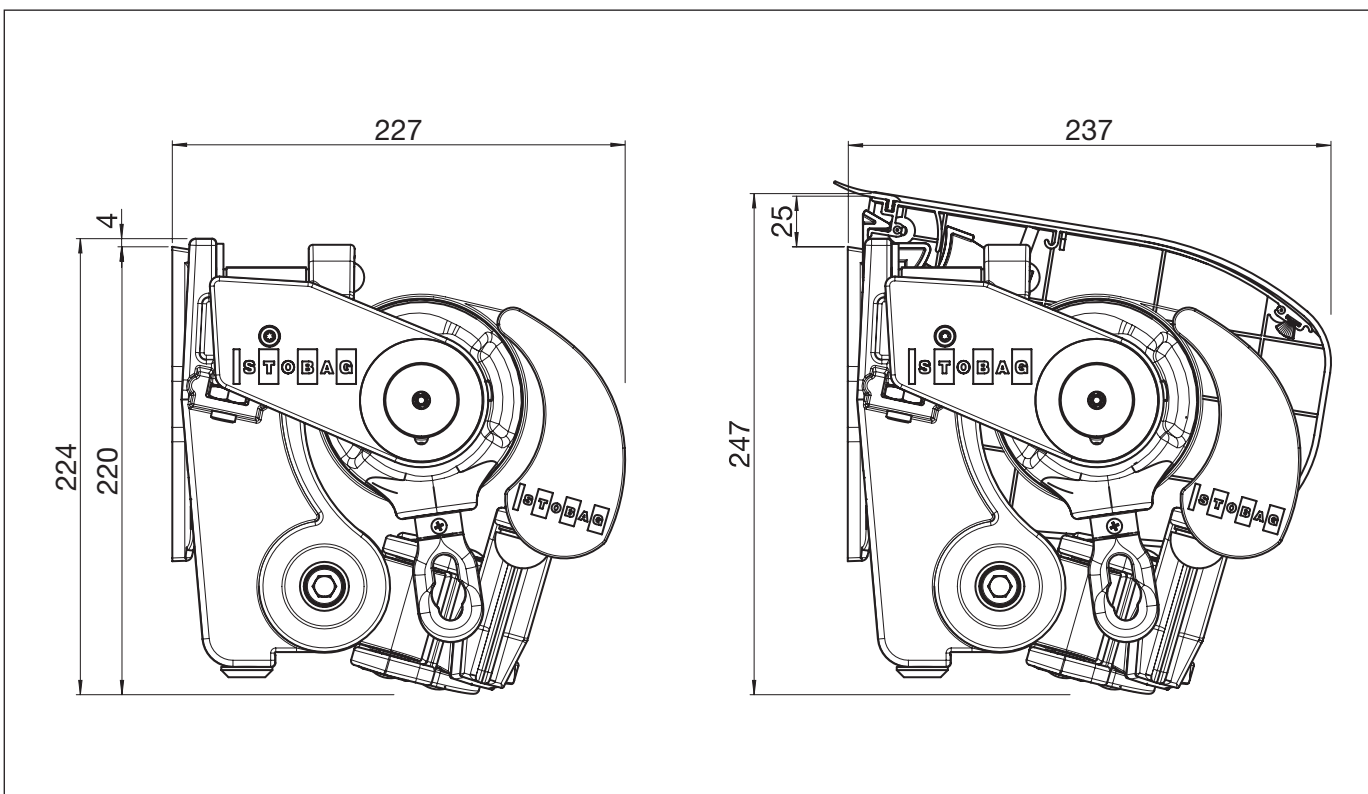


SELECT S8130

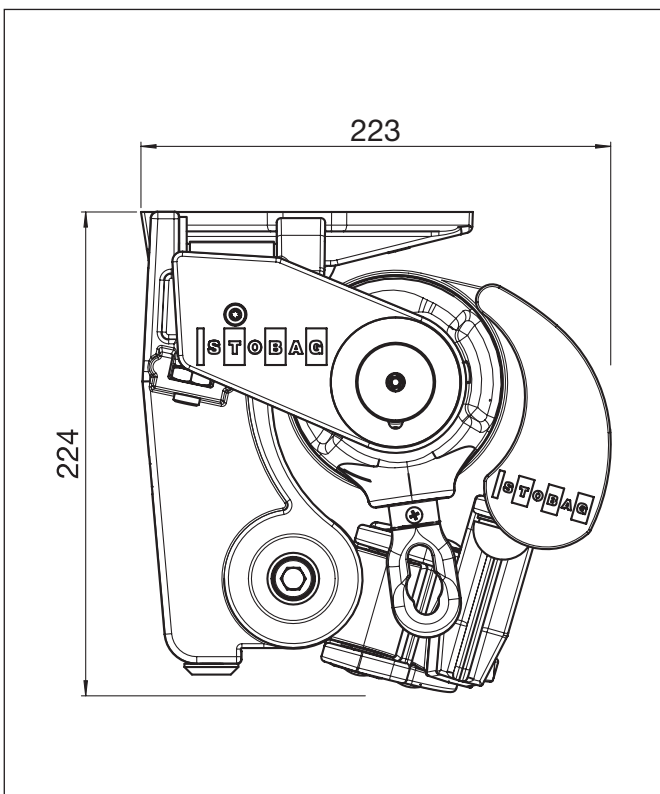
Folding arm awning with mounting bar

S8130

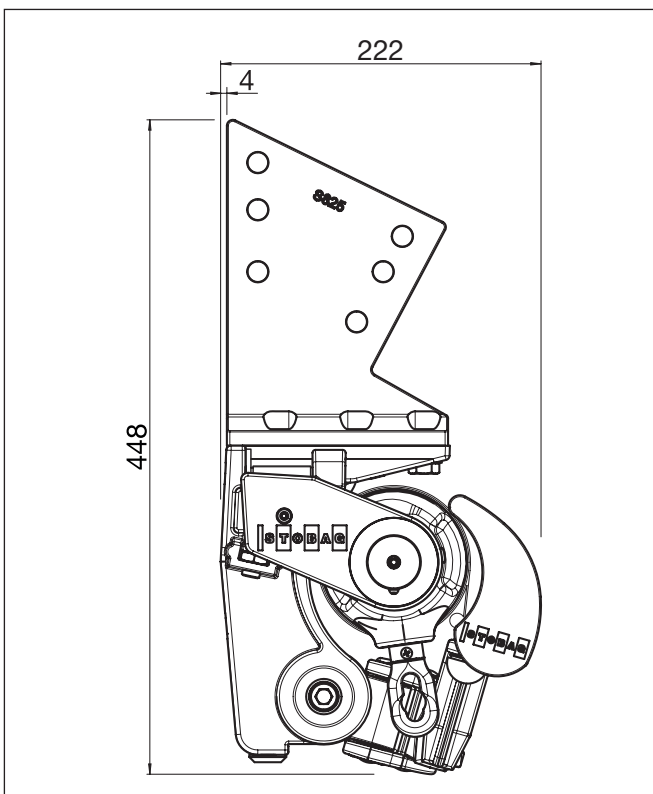
Wall fixing



Top fixing



Rafter installation

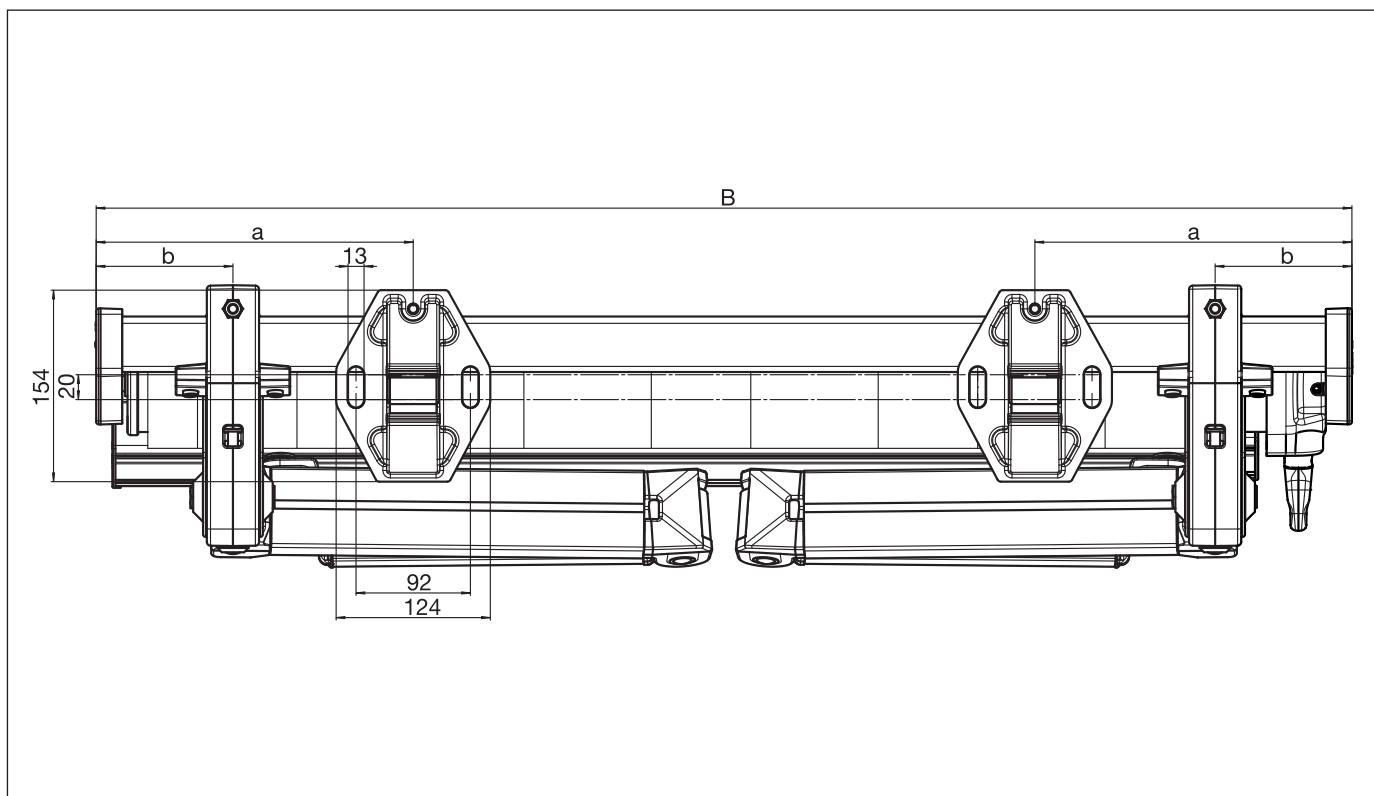


SELECT S8130

Folding arm awning with mounting bar

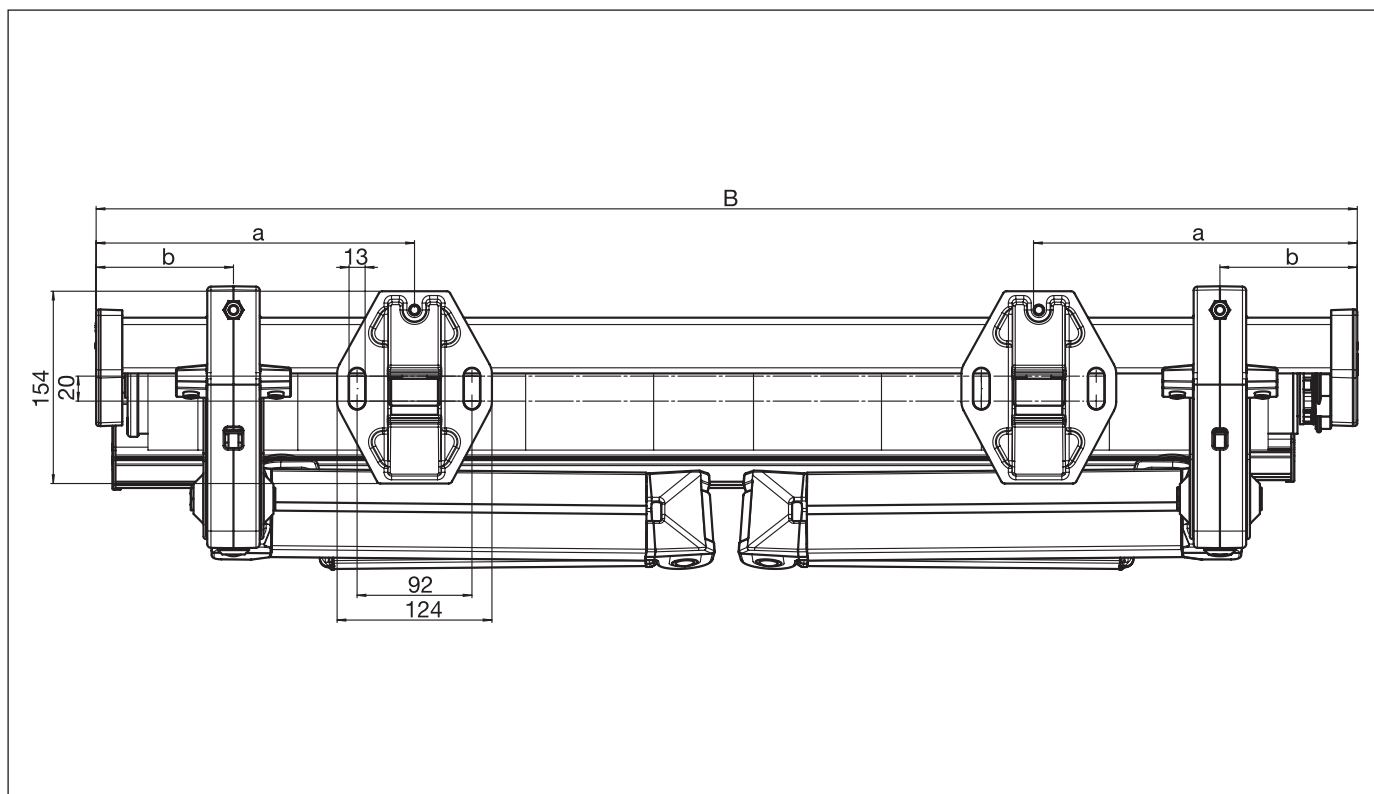
S8130

Installation drawing with gearbox



S8130

Installation drawing with motor drive



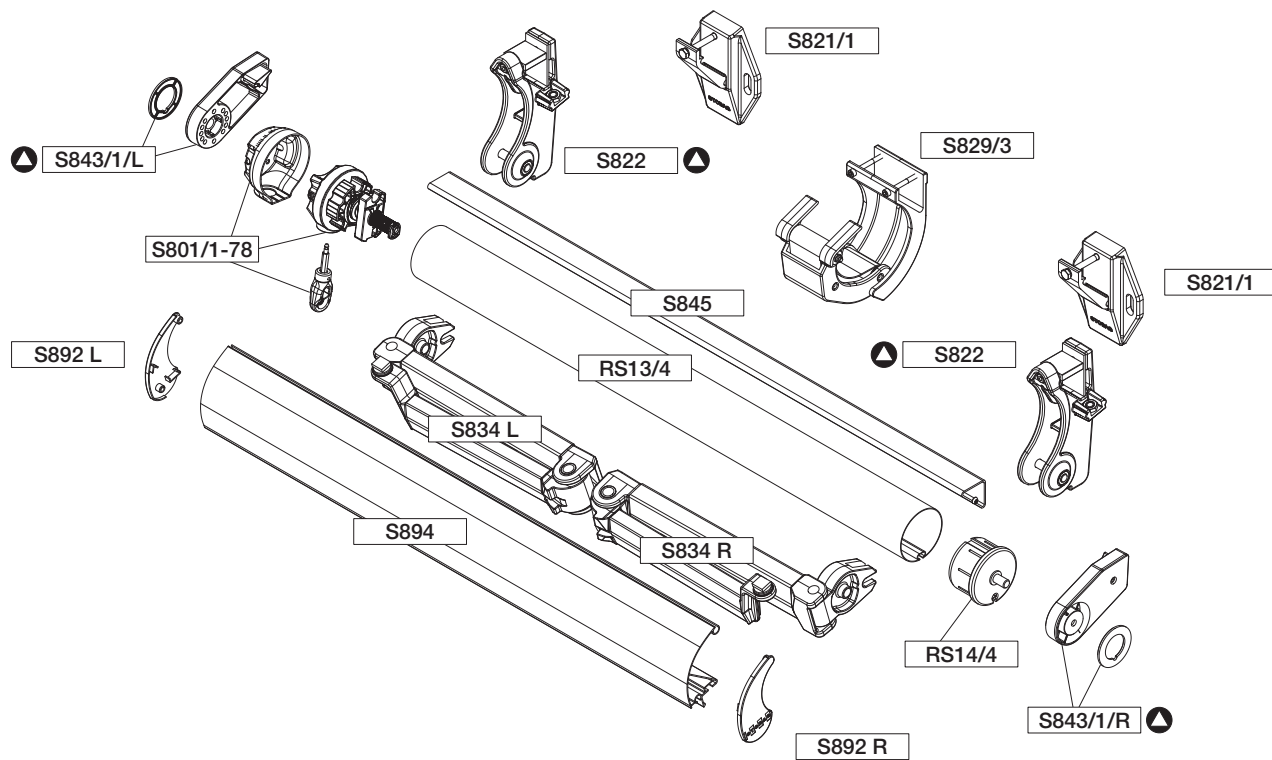
B = Total width

SELECT S8130

Folding arm awning with mounting bar

S8130

Exploded view



Set:

▲ = S8041/1

S8130

SELECT S8130

Folding arm awning with mounting bar

S8130

Arms		
S834	100 cm	pair
	140 cm	pair
	150 cm	pair
	160 cm	pair
	180 cm	pair
	200 cm	pair
	225 cm	pair
	250 cm	pair
	275 cm	pair
	300 cm	pair
S833	300 cm	pair
	325 cm	pair
	350 cm	pair

Arm support		
S822	Arm support	pc.
S827/1	Ombromatic set incl. 6 pan connection axle S227/3 (2 x 2.5 m) (set without arms)	pc.

Fixing brackets		
S821/1	Standard	pc.
S821/2	Small	pc.
S821/9	Small	pc.
S831/3	To be inserted from front	pc.
S831/5	Small, to be inserted from front	pc.
S825	Fixing brackets for rafters	pc.
S825/1	Fixing brackets for rafters, to be inserted from front	pc.
S821/1/..	Sole plate for S821/1, S821/3	pc.
S824	Bolt for S821/1/1	pc.
S821/2-1	Plate for S821/2	pc.
S842/10	Underlay profile (1m)	pc.
S842/1/40	Underlay profile (400 cm)	pc.

Set for gearbox bearing and opposed bearing		
S843/1/lr		pc.

Gearbox set (left)		
S801/1-78	With end stop	pc.
S801/1-85	With end stop	pc.

Gearbox set (right)		
S801/2-78	With end stop	pc.
S801/2-85	With end stop	pc.

Gearbox		
S865/15	Larger then 20 m ² and 4 arms	pc.

Tubular motors		
Motor drive E / E STAS/STAK 3		pc.
Motor drive E radio / E radio STAS/STAK 4		pc.

Mounting bar			
S845	Triangular mounting bar 45/45 mm	4.00 m	pc.
		4.50 m	pc.
		5.00 m	pc.
		5.50 m	pc.
		6.00 m	pc.
		6.50 m	pc.
		7.00 m	pc.

Mounting bar link		
S854/1 for S845	40 cm	pc.
S854/2 for S845	600 cm	pc.

Roller tube galvanised			
RS13/4	78 x 1.00 mm	4.00 m	pc.
		5.00 m	pc.
		5.50 m	pc.
		6.00 m	pc.
		6.50 m	pc.
		7.00 m	pc.
		7.00 m	pc.
RS13/7	85 x 1.00 mm	5.00 m	pc.
		6.00 m	pc.
		7.00 m	pc.
RS16/3	Link sleeve for Roller tube 78 mm		pc.

Roller tube gudgeon, round		
RS14/4	78 mm plastic without board	pc.
RS14/4/2	78 mm plastic with board	pc.
RS14/7	85 mm plastic without board	pc.
RS14/7/2	85 mm plastic with board	pc.

Components list

Front rail			
S894	4.00 m		pc.
	4.50 m		pc.
	5.00 m		pc.
	5.50 m		pc.
	6.00 m		pc.
	6.50 m		pc.
	7.00 m		pc.
	4.00 m		pc.
	4.50 m		pc.
	5.00 m		pc.
S875/1	6.00 m		pc.
	6.50 m		pc.
	7.00 m		pc.

Front rail stop		
S826/1	for S875/1	pc.
S826/2	for S894	pc.

Link profile			
S891	for S894	50 cm	pc.
S871/1	for S875/1	50 cm	pc.
		600 cm	pc.

Front rail end caps		
S892	for S894	pair
S876	for S875/1	pair

Roller tube support		
S829/3		pc.

Top board			
S877/2	4.00 m		pc.
	4.50 m		pc.
	5.00 m		pc.
	5.50 m		pc.
	6.00 m		pc.
	6.50 m		pc.
	7.00 m		pc.

Top board link		
S870/2	for S877/2	pc.

Rubber profile		
S882	for S877/2	lm

End plate		
S878/2	for S877/2	pair

Set for top board support		
S879/4	for S877/2	pc.

Band brush			
S510/1		grey	lm/Roll
S510/2		black	lm/Roll

Operating handles			
S804	80 cm		pc.
	100 cm		pc.
	120 cm		pc.
	135 cm		pc.
	150 cm		pc.
	160 cm		pc.
	180 cm		pc.
	200 cm		pc.

Operating handles fixation		
S211		pc.

Set		
S8041/1	consisting of:	pc.
▲	2 bearings for gearbox/opposed bearing with ball bearing S843/1/lr	
	2 arm supports S822	
	1 set of screws	

Set		
S8055	consisting of:	pc.
	2 bearings for gearbox and opposite side S835 L+R	
	1 plastic liner for opposed bearing	
	2 end caps for gearbox bearing and opposed bearing	
	2 end caps for mounting bar S852 L+R	
	1 set of screws	

SELECT S8130

Folding arm awning with mounting bar

S8041/1



Set

This set is used with the triangular mounting bar S845. The knock-up security serves also to adjust the fall angle. The electric drive is fixed to the opposed bearing S843/1/lrseitig.

DELIVERY

2 gearbox bearing and opposed bearing S843/1/lr
2 arm supports S822
1 set of screws

PACKAGING UNIT

Set

S843/1/lr



Kit for gearbox bearing and opposed bearing

Gearbox bearing and opposed bearing for all types of awnings with triangular mounting bar. Fits all STOBAG gears and electric drives. The ball bearing is always used on the opposed bearing.

ENGINEERING DATA

Screws for the gearbox installation M6 x 20 mm

MATERIAL

Aluminium alloy casting

Ball bearing:

steel

Set of screws

stainless steel

PACKAGING UNIT

Pair

S822



Arm support

Arm support for SELECT, SELECT-STOBOSCOPE, SELECT-BOX, SELECT-BETA.

For types of arms S830, S832/1, S833, S834, S840.

MATERIAL

Aluminium alloy casting

Set of screws

stainless steel

PACKAGING UNIT

Piece

SELECT S8130

Folding arm awning with mounting bar

S8055



Kit gearbox bearing and opposed bearing for S845

This set fits all types of awnings with triangular mounting bar. It is possible to move the gearbox bearing and the opposed bearing on the mounting bar.

DELIVERY

2 gearbox bearing and opposed bearing	S853 L+R
1 plastic liner for opposed bearing	
2 end caps for gearbox bearing and opposed bearing	
2 end caps (for mounting bar)	S852 L+R
1 set of screws	

PACKAGING UNIT

Set

S801/1-78 S801/1-85



Gearbox set (left) with end stop

These bevel gears have a considerably better mechanical efficiency than a worm gearbox. They can therefore be used with smaller reduction. For the retraction of the awning, lesser turns are necessary. More than 600 cm TW only possible with a motor.

ENGINEERING DATA

S801/1-78:	for ø 78 roller tube
S801/1-85:	for ø 85 roller tube
S800:	with end stop
Reduction:	4.6:1
Drive:	with ring
Use:	up to max. 350cm projection with 2 arms, up to 20m ²

DELIVERY

1 gear mechanism S800
1 gearboxcover S810
1 operating handle ring

MATERIAL

Aluminium alloy casting	
Set of screws:	stainless steel
Operating handle ring:	plastic

PACKAGING UNIT

Piece

SELECT S8130

Folding arm awning with mounting bar

S801/2-78 S801/2-85



Gearbox set (right) with free end stop

These bevel gears have a considerably better mechanical efficiency than a worm gearbox. They can therefore be used with smaller reduction. For the retraction of the awning, lesser turns are necessary. More than 600 cm TW only possible with a motor.

ENGINEERING DATA

S801/2-78:	for ø 78 roller tube
S801/2-85:	for ø 85 roller tube
S800:	with end stop
Reduction:	4.6:1
Drive:	with ring
Use:	up to max. 350cm projection with 2 arms, up to 20m ²

DELIVERY

1 gear mechanism S800
1 gearboxcover S810
1 operating handle ring

MATERIAL

Aluminium alloy casting
Set of screws: stainless steel
Operating handle ring: plastic

PACKAGING UNIT

Piece

S865/15/..



Bevel gearbox with transmission

These bevel gearbox have a considerably better mechanical impact than worm gearbox. They can be used with a smaller reduction. For the retraction of the awning lesser turns are necessary. These gearbox fit the folding arm awnings **Select S8130/Select-Plus S8133** and are used according to the size. Usually with 4 arms and larger than 20m². Spare part!

ENGINEERING DATA

S865/15:	without end stop
Reduction:	10.5:1
Drive:	with ring S806/1
Output:	interior square 13 x 13mm
Use:	for 4 Arms and larger than 20m ²
S865/15 li	bevel gearbox with transmission left
S865/15 re	bevel gearbox with transmission right

MATERIAL

Aluminium alloy casting (ends in steel)
Set of screws: stainless steel

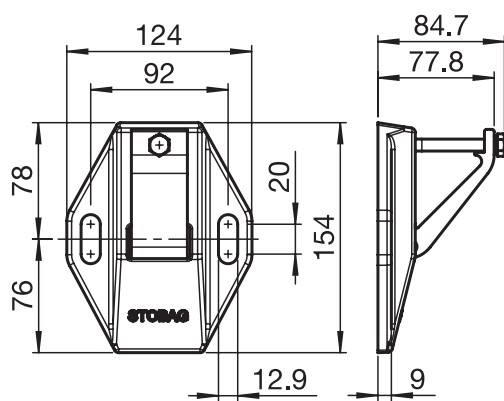
PACKAGING UNIT

Piece

SELECT S8130

Folding arm awning with mounting bar

S821/1



Fixing bracket

These fixing brackets can be used for wall or top fixing for the awnings SELECT S8130, SELECT-PLUS S8133, SELECT-OMBRAMATIC S8135, SELECT-STOBOSCOPE S8130/2 and SELECT-BOX S8250.

MATERIAL

Aluminium alloy casting

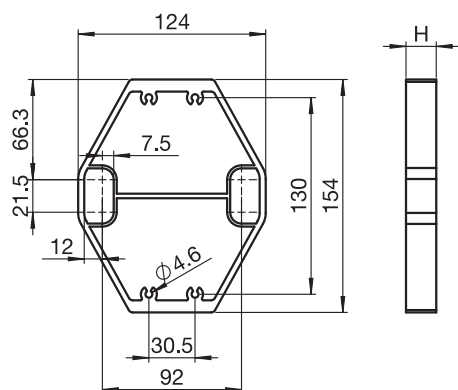
Set of screws

stainless steel

PACKAGING UNIT

Piece

S821/1/..



Sole plate

These sole plates are to be used with the brackets S821/1 only. They can be built up to the different insulation thickness. To be installed together with the brackets.

ENGINEERING DATA

Suitable for bracket S821/1 only

S821/1/1 = 15 mm

S821/1/5 = 50 mm

S821/1/12 = 120 mm

S821/1/2 = 20 mm

S821/1/8 = 80 mm

S821/1/40 = 4000 mm

S821/1/3 = 30 mm

S821/1/10 = 100 mm

MATERIAL

Extruded aluminium profiles

PACKAGING UNIT

Piece

SELECT S8130

Folding arm awning with mounting bar

S824



Bolt for sole plate

The bolt helps to centre the sole plate S821/1/..., if several plates are on top each other.

MATERIAL

Steel galvanised

PACKAGING UNIT

Piece

Underlay profile

Underlay profile for S721/1 und S821/2 fixing brackets. Suitable for exterior insulation or rafters.

ENGINEERING DATA

Standard lengths: S842/10 = 1m
S842/1/40 = 400 cm

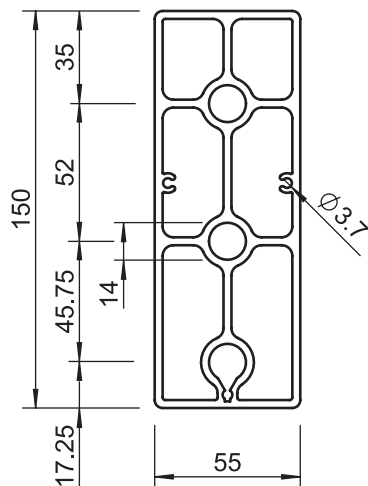
MATERIAL

Extruded aluminium profiles

PACKAGING UNIT

Piece

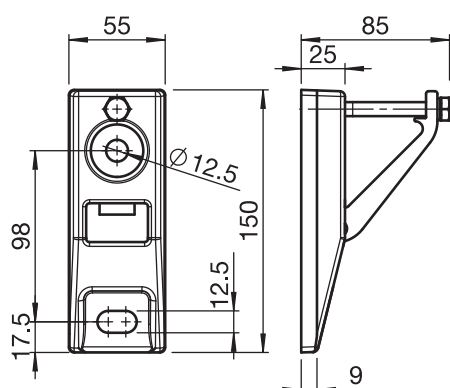
S842



SELECT S8130

Folding arm awning with mounting bar

S821/2



Fixing bracket (small)

These fixing brackets are for wall or top fixing, where small brackets are required, p.ex. for steel-wood constructions and are being used for awnings types SELECT S8130, SELECT-PLUS S8133, SELECT-OMBRAMATIC S8135, SELECT-STOBOSCOPE S8130/2 and SELECT-BOX S8250.

MATERIAL

Aluminium alloy casting

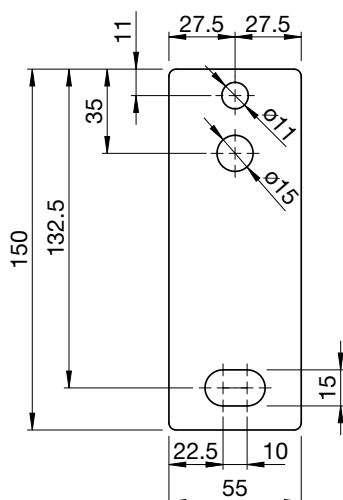
Set of screws:

stainless steel

PACKAGING UNIT

Piece

S821/2-1



Plate

Plate suitable for console S821/2. The reinforcement plate is suitable for soft ground.

ENGINEERING DATA

Standard lengths:

150 x 55 x 6 cm

MATERIAL

Chrome steel

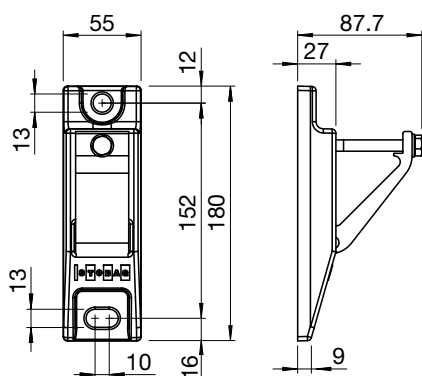
PACKAGING UNIT

Piece

SELECT S8130

Folding arm awning with mounting bar

S821/9



Fixing bracket (small)

These fixing brackets are for wall or top fixing, where small brackets are required, p.ex. for steel-wood constructions and are being used for awnings types SELECT S8130, SELECT-PLUS S8133, SELECT-OMBRAMATIC S8135, SELECT-STOBOSCOPE S8130/2 and SELECT-BOX S8250.

NOT POSSIBLE WITH COVER BOARD

MATERIAL

Aluminium alloy casting

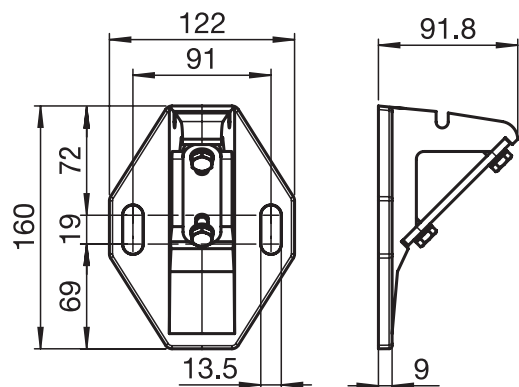
Set of screws:

stainless steel

PACKAGING UNIT

Piece

S831/3



Fixing bracket (to be inserted from front)

These fixing brackets are for wall or top fixing for awnings types SELECT S8130, SELECT-PLUS S8133, SELECT-OMBRAMATIC S8135, SELECT-STOBOSCOPE S8130/2 and SELECT-BOX S8250.

Special execution allowing the mounting bar to be inserted from front.

ENGINEERING DATA

Steel plate to be held across to enable to insert from front

MATERIAL

Aluminium alloy casting

Set of screws

stainless steel

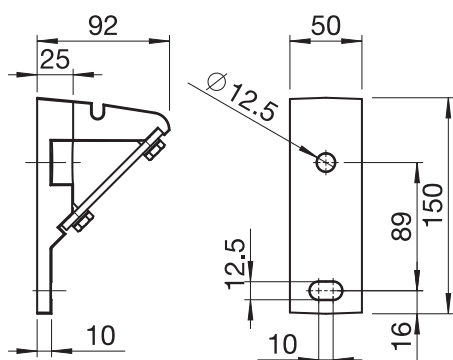
PACKAGING UNIT

Piece

SELECT S8130

Folding arm awning with mounting bar

S831/5



Fixing bracket (small, to be inserted from front)

These brackets are for wall or top fixing, where small brackets are required, p.ex. for steel-wood constructions and are being used for awnings types SELECT S8130, SELECT-PLUS S8133, SELECT-OMBRAMATIC S8135, SELECT-STOBOSCOPE S8130/2 and SELECT-BOX S8250. Special execution allowing the mounting bar to be inserted from front.

ENGINEERING DATA

Steel plate to be held across to enable to insert from front

MATERIAL

Aluminium alloy casting

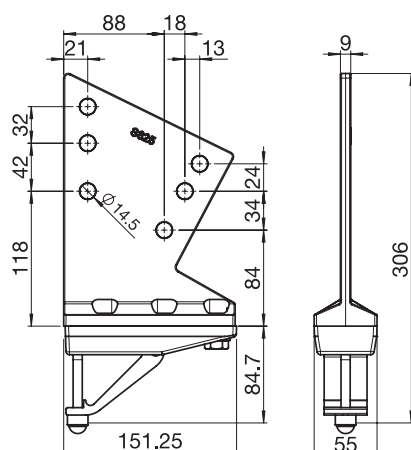
Set of screws

stainless steel

PACKAGING UNIT

Piece

S825



Fixing brackets for rafters

These fixing brackets are made for installations on rafters (lateral fixation) for awnings SELECT S8130, SELECT-PLUS S8133, SELECT-OMBRAMATIC S8135, SELECT-STOBOSCOPE S8130/2 and SELECT-BOX S8250.

MATERIAL

Aluminium alloy casting

Screws

stainless steel

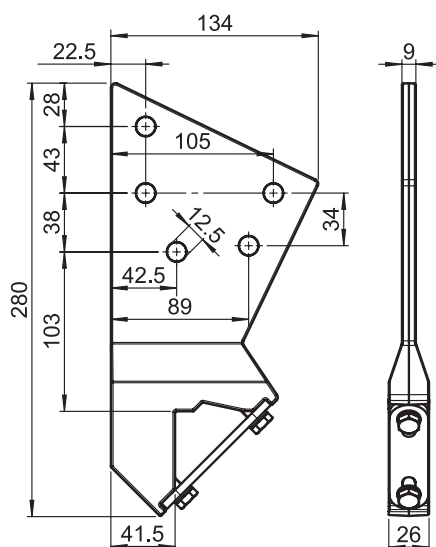
PACKAGING UNIT

Piece

SELECT S8130

Folding arm awning with mounting bar

S825/1



Fixing brackets for rafters (to be inserted from front)

These fixing brackets are made for installations on rafters (lateral fixation) for awnings SELECT S8130, SELECT-PLUS S8133, SELECT-OMBRAMATIC S8135, SELECT-STOBOSCOPE S8130/2 and SELECT-BOX S8250.

ENGINEERING DATA

Steel plate to be held across to enable to insert from front

MATERIAL

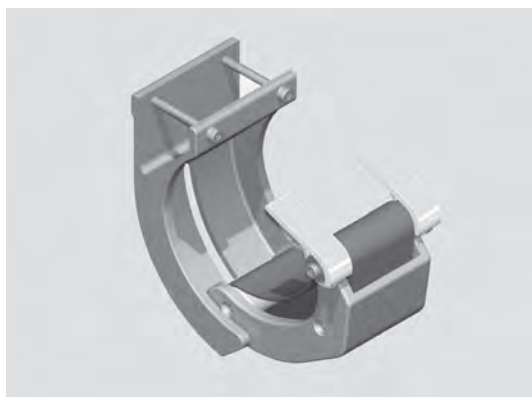
Aluminium alloy casting

Screws: stainless steel

PACKAGING UNIT

Piece

S829/3



Roller tube supports

Roller tube supports for the awnings SELECT S8130 and SELECT-STOBOSCOPE S8130/2. Awnings of more than 601 cm width need a roller tube support. The supports can be adjusted to the fall angle. The roller tube supports with scrolling band do not create friction on the cover seam and allow awning widths up to 18m.

ENGINEERING DATA

For roller tube \varnothing 78 mm

Band width 58 mm

MATERIAL

Aluminium alloy casting

Rolls and scrolling bands:

Set of screws

plastic

stainless steel

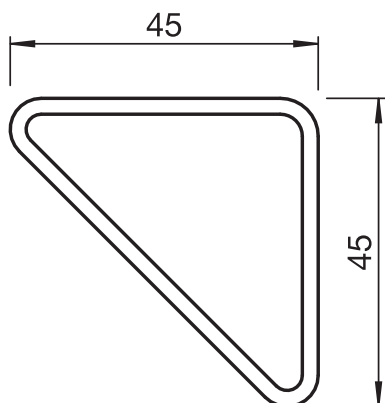
PACKAGING UNIT

Piece

SELECT S8130

Folding arm awning with mounting bar

S845



Mounting bar

Mounting bar for all SELECT models.

ENGINEERING DATA

Standard lengths: 400, 450, 500, 550, 600, 650, 700 cm

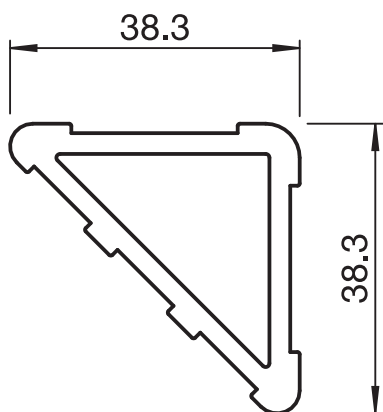
MATERIAL

Triangular mounting bar skin passed, powder coated, galvanic pre-treatment

PACKAGING UNIT

Piece

S854/1 S854/2



Link profile to link the mounting bar S845

The link profile is to be inserted into the mounting bar S845 and riveted. It is necessary if the width of the awning is more than 700 cm and two mounting bars S845 need to be linked.

ENGINEERING DATA

S854/1: shortened to 40 cm
S854/2: standard length 600 cm

MATERIAL

Triangular extruded aluminium profile

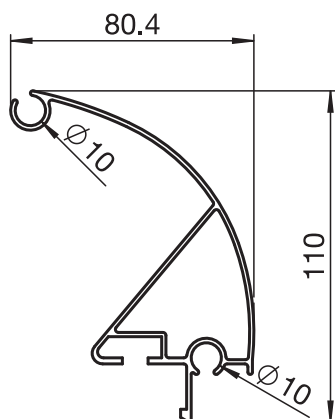
COLOR

Alu / raw

PACKAGING UNIT

Piece

S894



Front rail

Front rail for the SELECT S8130, SELECT-BOX S8250, SELECT-PLUS S8133 and SELECT-OMBRAMATIC S8135.

ENGINEERING DATA

Standard lengths: 400, 450, 500, 550, 600, 650, 700 cm

MATERIAL

Front rail: extruded aluminium profil

PACKAGING UNIT

Piece

SELECT S8130

Folding arm awning with mounting bar

S892



End caps

Lateral end caps for front rail S894.

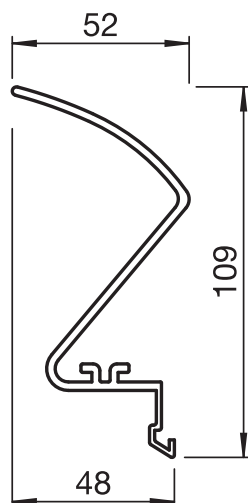
MATERIAL

Plastic

PACKAGING UNIT

Pair

S891



Link profile

To link the front rail S894.

SCOPE OF DELIVERY

Standard length 50 cm

MATERIAL

Extruded aluminium profile

PACKAGING UNIT

Piece

S826/1



Front rail stop

This front rail stop is generally used with motor drive in connection with the from rail. The front rail stop is fixed onto both ends of the front rail.

ENGINEERING DATA

For front rail S875/1

MATERIAL

Front rail stop: aluminium alloy casting
Screws: stainless steel

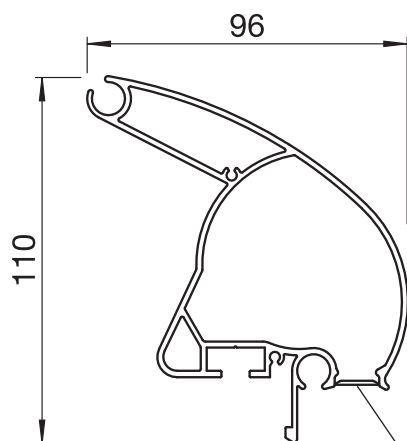
PACKAGING UNIT

Piece

SELECT S8130

Folding arm awning with mounting bar

S875/1



Tear-open tape

Front rail

This front rail can be used for the following types of awnings:
SELECT S8130, SELECT-BOX S8250 if re-enforced arms are required.
SELECT-STOBOSCOPE S8130/2.

ENGINEERING DATA

Standard lengths: 400, 450, 500, 600, 700 cm

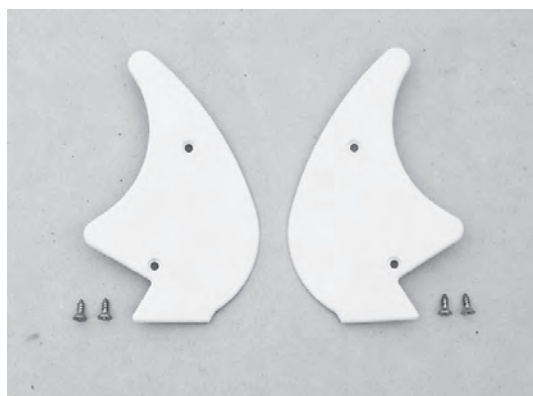
MATERIAL

Mounting bar: extruded aluminium profile

PACKAGING UNIT

Piece

S876



End caps

Lateral end caps for front rail S875/1 without Volant-Plus.

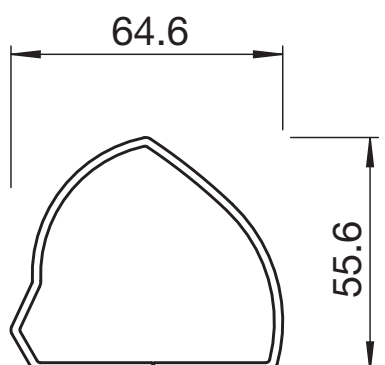
MATERIAL

Plastic

PACKAGING UNIT

Pair

S871/1



Link profile

To link the front rail S875/1.

DELIVERY

Standard lengths 50, 600 cm

MATERIAL

Extruded aluminium profile

PACKAGING UNIT

Piece

SELECT S8130

Folding arm awning with mounting bar

S826/2



Front rail stop

This front rail stop is generally used with the type SELECT with motor drive in connection with the front rail S894
The front rail stop is fixed onto both ends of the front rail.

ENGINEERING DATA

For front rail S894

MATERIAL

Front rail stop: plastic
Screws: stainless steel

PACKAGING UNIT

Piece

S877/2



Top board

Top board for SELECT awnings including band brush with slot to take rubber profile.

DELIVERY

Standard lengths 401, 451, 501, 551, 601, 651, 701 cm

MATERIAL

Extruded aluminium profile

PACKAGING UNIT

Piece

S878/2



Top board end plate

End cap for top board S877/2.

DELIVERY

2 top board end caps (pair) S878/2

MATERIAL

Top board end caps plastic

PACKAGING UNIT

Pair

SELECT S8130

Folding arm awning with mounting bar

S879/4



Set for top board support

Set for top board support for top board S877/2. Adjustable incl. top board binder (spring tension).

DELIVERY

1 top board support	S879/4
1 top board binder	S879/3
1 set of screws	

MATERIAL

PVC	
Steel tension spring, screws	stainless steel

PACKAGING UNIT

Set

S882



Rubber profile

This rubber profile can be used at the rear of the SELECT top board S877/2 to fill the gap to the wall.
Installation with silicone spray or soap.

ENGINEERING DATA

Size:	width 35 mm
-------	-------------

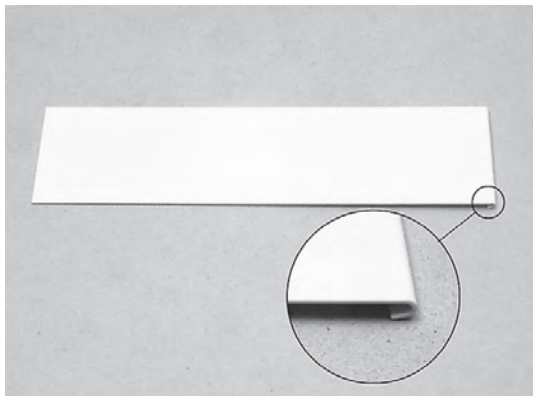
MATERIAL

Rubber profile

PACKAGING UNIT

Linear meter, rolls of 100 m

S870/2



Abutting sheet

To link the SELECT top boards

MATERIAL

Aluminium sheet 1.0mm	230 x 80 x 1 mm
-----------------------	-----------------

PACKAGING UNIT

Piece

SELECT S8130

Folding arm awning with mounting bar

S834

Folding arms



Folding arms for all types of SELECT awnings (p.ex. awnings for patios, terraces, etc).

ENGINEERING DATA

Arms with integrated spring and swivel mechanism for precise fall adjustment. Arm projections are generally measured from wall to the leading edge of the front rail.

Profile sizes:	50 x 30 mm 65 x 40 mm
Load capacity:	TÜV approved, 6 x 3 m (2 arms)
Standard lengths:	100, 140, 150, 160, 180, 200, 225, 250, 275, 300 cm

MATERIAL

Arm profiles:	extruded aluminium profiles
Joints:	aluminium alloy casting
Double cables:	stainless steel cables

PACKAGING UNIT

Pair or pallet of 50 pairs

SELECT S8130

Folding arm awning with mounting bar

S833

Folding arms



Folding arms for larger awnings, such as Select S8130, with projections up to 350cm (p.ex. awnings for patios, gardens, terraces, restaurants and shops).

ENGINEERING DATA

Arms with integrated spring and swivel mechanism for precise fall adjustment. Arm projections are generally measured from wall to the leading edge of the front rail.

Profile sizes: 50 x 30 mm 67,4 x 41 mm
Load capacity: TÜV approved, 6 x 3.5 m (2 arms)
Standard lengths: 300, 325, 350 cm



Length of arms	300 cm	325 cm	350 cm
K in cm	11	12	14

MATERIAL

Arm profiles: extruded aluminium profiles
Joints: aluminium alloy casting
Double cables: stainless steel cables

PACKAGING UNIT

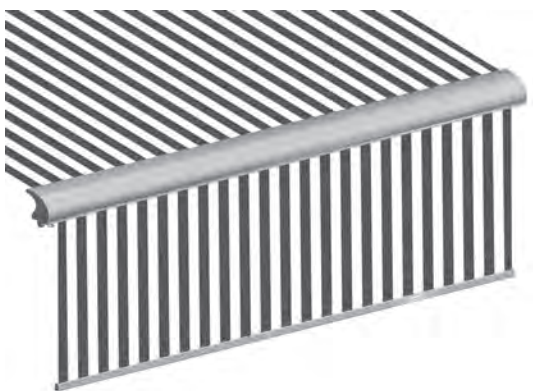
Pair or pallet of 50 pairs



VOLANT-PLUS FOR TYPE SELECT

Roller valance

VOLANT-PLUS



	max. 700 cm		* max. 170 cm
--	-------------	--	---------------

* 120 cm Acryl
* 170 cm Soltis

Description

The roller valance is a front rail with integrated roller tube, cover and front tube. The cover can be lowered 120 cm with a operating handle and gearbox. This front rail can only be used for the following types of awnings: SELECT S8130, SELECT S8133 PLUS, SELECT-BOX S8250.

ENGINEERING DATA

Model with adjustable valance	Max. width	/ max. projection
SELECT S8130 (with 2 arms)	TW = 600 cm	P = 350 cm
SELECT S8130 (with 4 arms)	TW = 601-700 cm	P = 250 cm
	TW = 640-700 cm	P = 275 cm
SELECT-Ombramatic S8135 (with 2 arms)	TW = 600 cm	P = 300 cm
SELECT S8133 PLUS (with 2 arms)	TW = 600 cm	P = 250 cm
SELECT S8133 PLUS (with 4 arms)	TW = 601/700 cm	P = 250 cm
SELECT-BOX S8250 (with 2 arms)	TW = 600 cm	P = 350 cm

METHOD OF DELIVERY

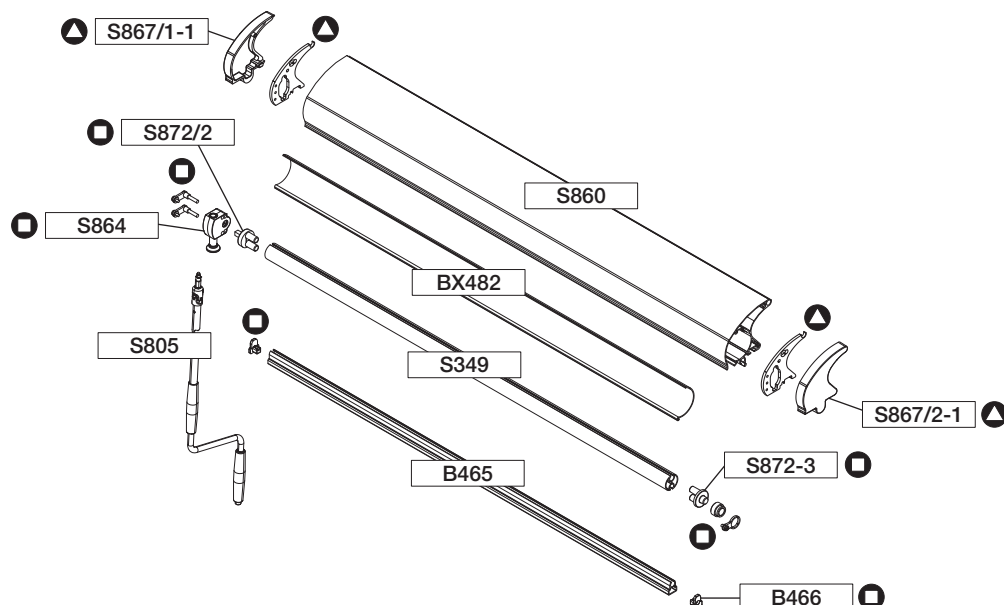
Front rail completely assembled, with cover.

VOLANT-PLUS FOR TYPE SELECT

Roller valance

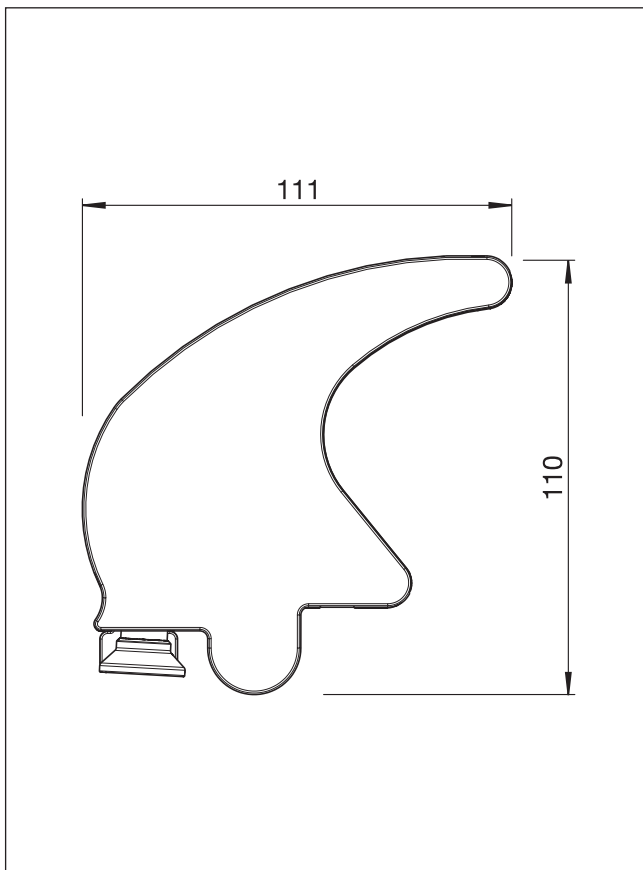
VOLANT-PLUS

Exploded view



Set:
 ▲ = S867-1
 ◻ = S859-3

Dimensions



Components list

AV-Front rail		
S860	7.00 m	pc.
Sliding bowl		
BX482	3.50 m	pc.
Front rail		
B465	6.00 m	pc.
	7.00 m	pc.
AV-Roller tube		
S349/1	4.00 m	pc.
	5.00 m	pc.
	6.00 m	pc.
	7.00 m	pc.
AV-Side cover fitting		
S867-1 consisting of:		pc.
▲ 1 Side cover left S867/1-1		
1 Side cover right S867/2-1		
2 Drop profile plates		
1 Set of screws		
AV-Set		
S859-3 consisting of:		pc.
◻ 1 AV-Gearbox S864		
1 Journal pin short S872-3		
1 Roller tube gudgeon square S872/2		
2 Front rail covers B466		
1 Set of screws		
Connecting rod pluggable		
S805	88 cm	pc.

VOLANT-PLUS FOR TYPE SELECT

Roller valance

S867-1



AV-Side cover fitting

AV-Side cover fitting for VOLANT-PLUS.

DELIVERY

1 Side cover left	S867/1-1
1 Side cover right	S867/2-1
2 Drop profile plates	
1 set of screws	

MATERIAL

End cap:	Plastic
Drop profile plate:	Aluminium sheet
Screws:	Stainless steel

PACKAGING UNIT

Set

S859-3



AV-Set

AV-Set for VOLANT-PLUS.

DELIVERY

1 AV-Gearbox	S864
1 Journal pin short	S872-3
1 Roller tube gudgeon square	S872/2
2 Front rail covers	B466
1 Set of screws	

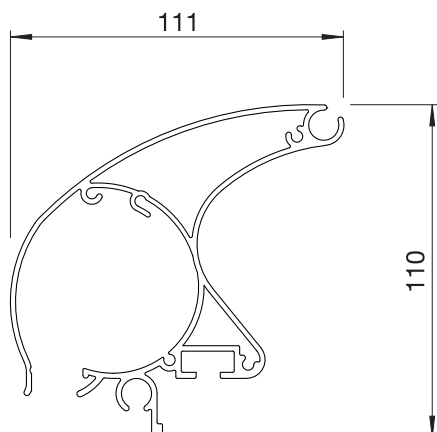
MATERIAL

Gearbox, Journal pin,	
Front rail cover:	Aluminium alloy casting
Screws:	Stainless steel

PACKAGING UNIT

Set

S860



AV-Front rail

AV-Front rail for the Select awning with chamber for the Valance-Plus up to 120 cm cover height. To let the valance down, the detachable band must be pulled off.

ENGINEERING DATA

Standard lengths:	700 cm
-------------------	--------

MATERIAL

Mounting bar:	extruded aluminium profile
---------------	----------------------------

PACKAGING UNIT

Piece

VOLANT-PLUS FOR TYPE SELECT

Roller valance

BX482



Sliding bowl

The sliding bowl is necessary for use with front rail S860.

ENGINEERING DATA

Standard lengths: 700 cm

MATERIAL

Plastic

PACKAGING UNIT

Piece

B465



Front rail

Valance declining profile suitable for drop valance, with rivets for awning fabric support.

ENGINEERING DATA

Standard lengths: 600, 700 cm

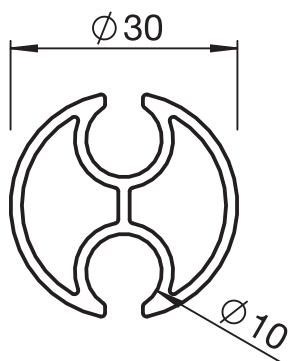
MATERIAL

Front rail: Extruded aluminium profiles

PACKAGING UNIT

Piece

S349/1



Roller tube

Roller tube for roller valance, with groove for the cover.

ENGINEERING DATA

Standard lengths: 400, 500, 600, 700 cm

MATERIAL

AV-Roller tube extruded aluminium profile

PACKAGING UNIT

Piece