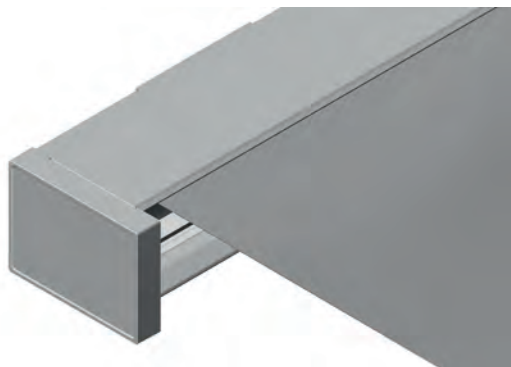


CAMABOX BX4000

Cassette awning with folding arms

BX4000



	min. 214 cm max. 600 cm		min. 150 cm max. 300 cm
--	----------------------------	--	----------------------------

	5°–35° Wall fixing 5°–35° Top fixing 5°–35° Rafter installation
--	---

Minimal width for a given projection

Projection	Minimal width
150 cm	214 cm
200 cm	254 cm
250 cm	314 cm
300 cm	374 cm

Description

Multi-piece U-shaped protective box (dimensions 230 x 170 mm) from extruded aluminium profile as support element of the structure. Side cover as cassette end for receiving fabric roller shaft \varnothing 78 mm from galvanised steel. The box profile is provided with a continuous hook for hanging the awning on the brackets used for the wall installation. The force is transmitted via the arm support, connected to the box profile, to which the jointed arms are mounted via a tilt joint. Drop profile from extruded aluminium in square shape (54 x 170 mm) with matching side covers from cast aluminium alloy. Folding arms with inverse incline of aluminium extruded profiles and precision parts of aluminium cast alloy, internal tension springs and double stainless steel cables and cable protector over the middle joint. Simple and infinite inclination angle adjustment via adjusting nut on the tilt joint from 5°–35° for wall, ceiling and frame installation. The aluminium profiles and aluminium cast parts are powder-coated in façade quality.

Wind resistance: The system fulfils wind resistance class 2 (to DIN 13561).

Cover: The cover with a spin-dyed acrylic cloth (price category 1), colour fast, very high UV protection, good tensile strength, water and dirt resistant is from the STOBAG collection. Polyester, acrylic etc. and various assembly technologies such as gluing, TENARA stitching, etc. as per STOBAG collection (collection index) can be optionally selected.

Drive: Tubular motor 230 VAC, 50 Hz or 120 VAC, 60 Hz (country-specific) with electromechanical brakes and electronic end position switch off. Thermal protection, protection class IP54 (spray water), with 50–150 cm connection cable. Optional remote-control version: Radio tubular motor 230 VAC, 50 Hz or 120 VAC, 60 Hz (country-specific) with electromechanical brakes and electronic end position switch off. Integrated radio receiver, thermal protection, protection class IP54 (spray water), with 50–150 cm connection cable. Manual version: Bevel gearbox with adjustable end stop and free-wheel crank handle, reduction ratio 4.6:1. The bevel gearbox is operated via a removable operating handle shaft of powder-coated metal in white and grey with hook and plastic handle.

Options:

Brackets: An additional ceiling bracket is required for ceiling mounting and an additional rafter bracket is required for rafter mounting.

Automation: Automation of the awning with a choice of the following variants.

- Somfy io wireless system: Select main motor io, select comfort packages and select SLT lighting with io.
- KNX/DALI interface: Select WT main motor and SLT lighting with DALI/ext. buttons.

LED lighting "Tunable White" integrated in the box: On the separate profile on the underside of the protective box, a groove is provided for integrated lighting, which is directed away from the wall at an angle of 40° and in which an LED strip (2700–5000 K) can be installed. This is covered by a reflective plastic profile.

Operation of LED SLT Stripe:

- io usage: On/off/dimming/color control.
- Operation via DALI/ext. buttons: DALI is controllable via home automation systems or buttons (DALI Feller rotary encoder, Art. no. 40090) on/off/dimming/color control.

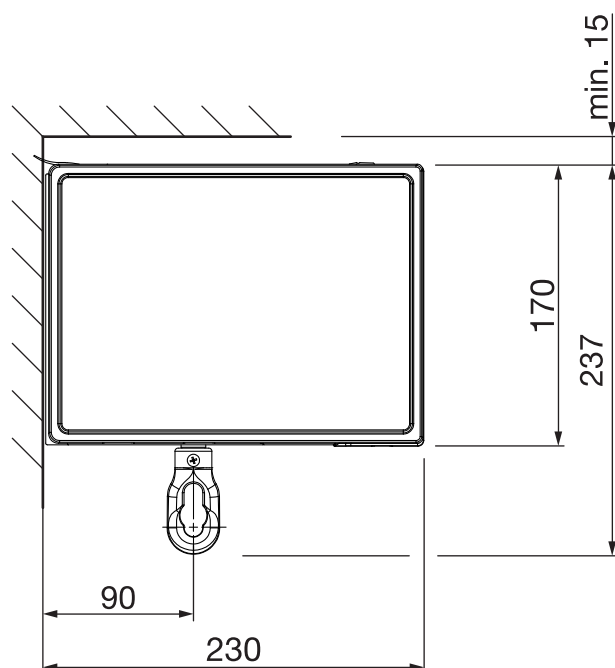
METHOD OF DELIVERY

Awnings completely assembled, with cover.

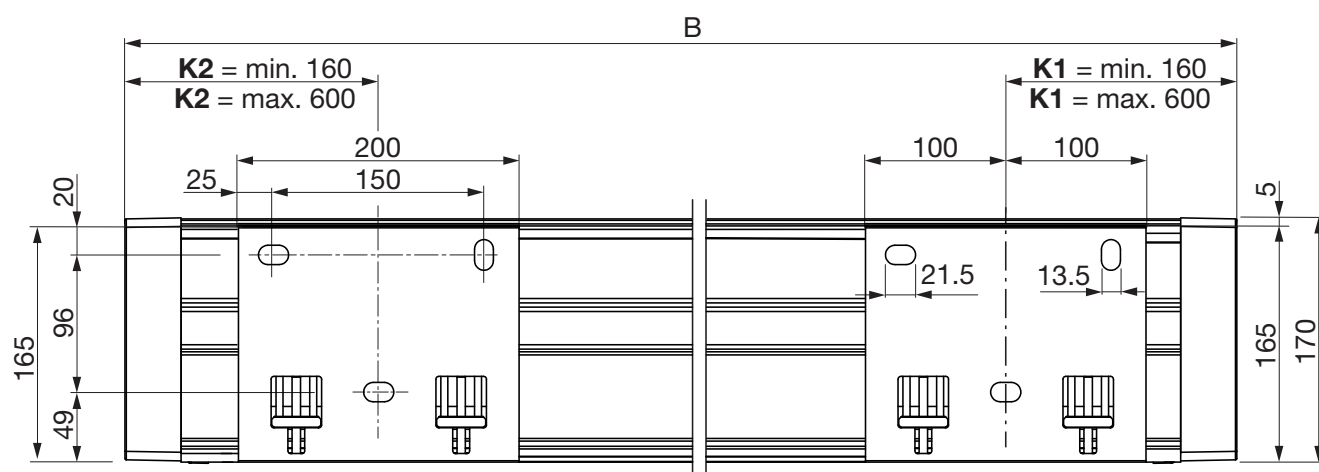
CAMABOX BX4000

Cassette awning with folding arms

Wall fixing



Installation drawing

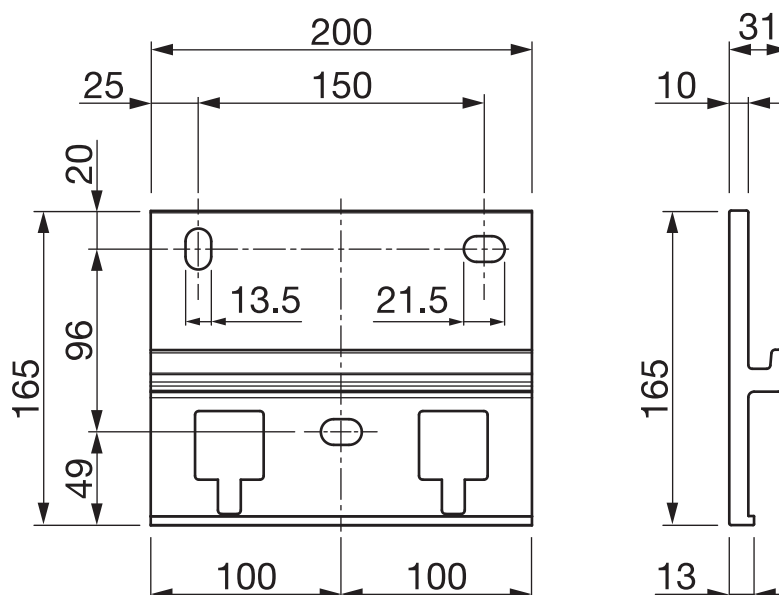


B = total width

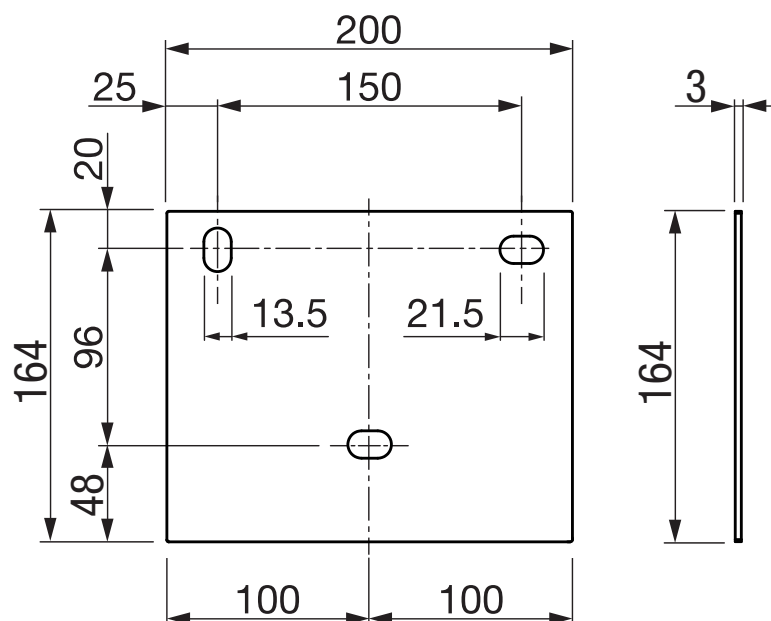
CAMABOX BX4000

Cassette awning with folding arms

Wall bracket BX424



Spacer sheet BX436



Cassette awning with folding arms

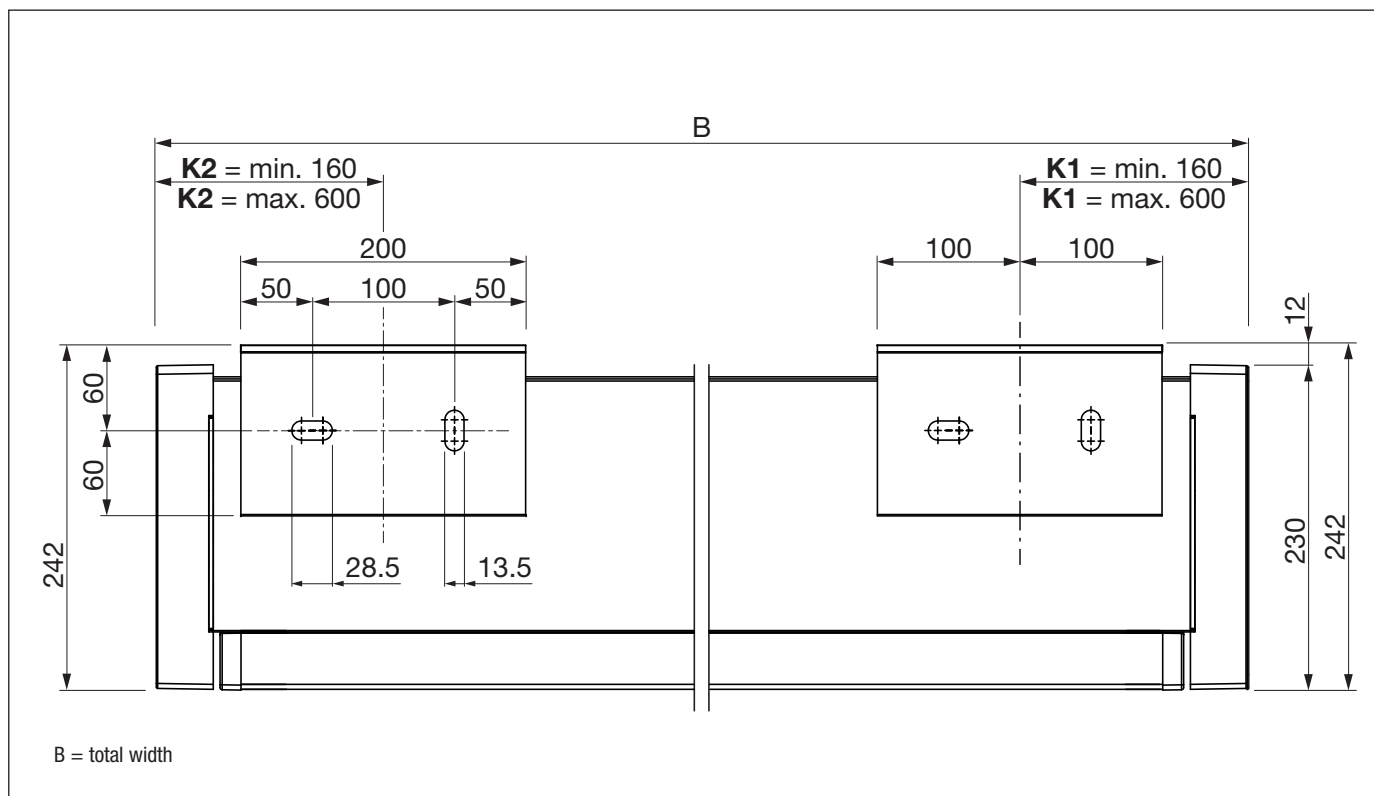
Technical drawing of a rectangular component with dimensions:

- Top horizontal dimension: 120
- Right vertical dimension: 42
- Right vertical dimension: 170
- Right vertical dimension: 212
- Bottom horizontal dimension: 12
- Bottom horizontal dimension: 230
- Bottom horizontal dimension: 242

CAMABOX BX4000

Cassette awning with folding arms

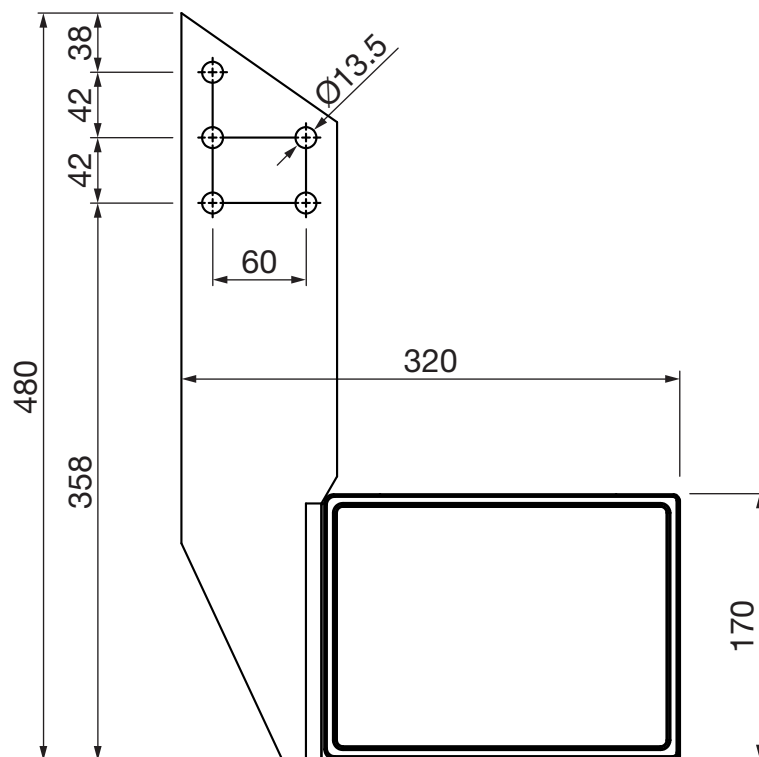
Installation drawing



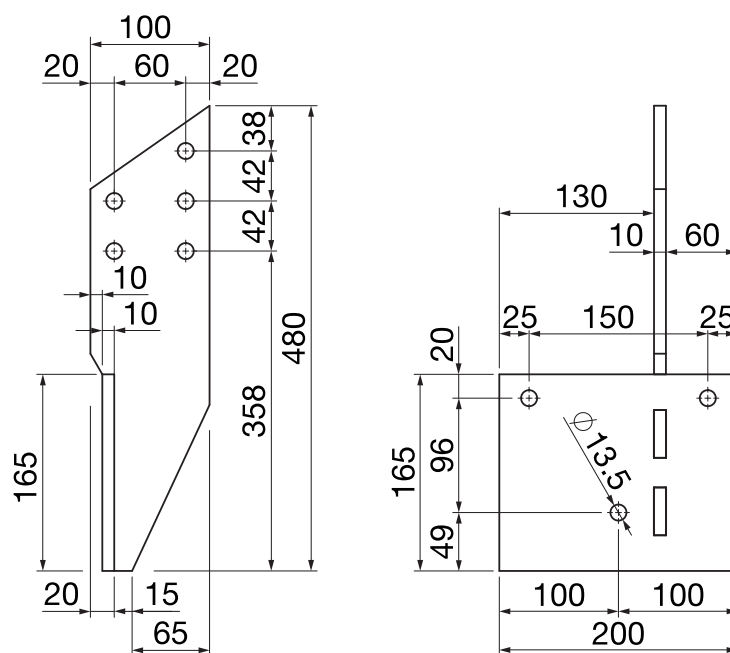
CAMABOX BX4000

Cassette awning with folding arms

Rafter installation



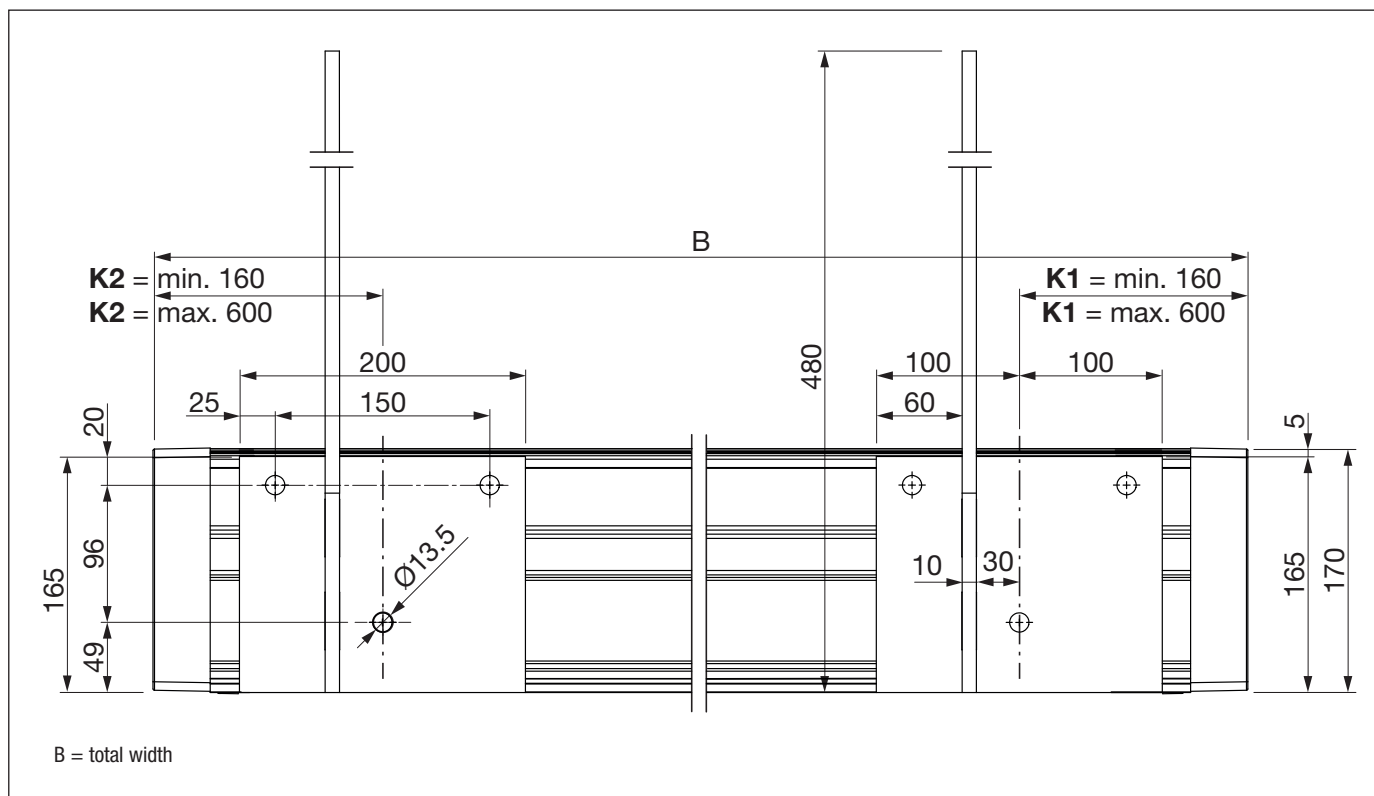
Rafter bracket BX427



CAMABOX BX4000

Cassette awning with folding arms

Installation drawing



CAMABOX BX4000

Cassette awning with folding arms

Brackets minimum – maximum

Folding arm BX420 with 150 cm projection		
Total width (w = in mm)	K1 / K2 (min. in mm)	K1 / K2 (max. in mm)
2134	160	160
2200	160	193
2300	160	243
2400	160	293
2500	160	343
2600	160	393
2700	160	443
2800	160	493
2900	160	543
3000	160	593
3014 - 6000	160	600

Folding arm BX420 with 200 cm projection		
Total width (w = in mm)	K1 / K2 (min. in mm)	K1 / K2 (max. in mm)
2534	160	160
2600	160	193
2700	160	243
2800	160	293
2900	160	343
3000	160	393
3100	160	443
3200	160	493
3300	160	543
3400	160	593
3414 - 6000	160	600

Folding arm BX420 with 250 cm projection		
Total width (w = in mm)	K1 / K2 (min. in mm)	K1 / K2 (max. in mm)
3134	160	160
3200	160	193
3300	160	243
3400	160	293
3500	160	343
3600	160	393
3700	160	443
3800	160	493
3900	160	543
4000	160	593
4014 - 6000	160	600

Folding arm BX420 with 300 cm projection		
Total width (w = in mm)	K1 / K2 (min. in mm)	K1 / K2 (max. in mm)
3734	160	160
3800	160	193
3900	160	243
4000	160	293
4100	160	343
4200	160	393
4300	160	443
4400	160	493
4500	160	543
4600	160	593
4614 - 6000	160	600

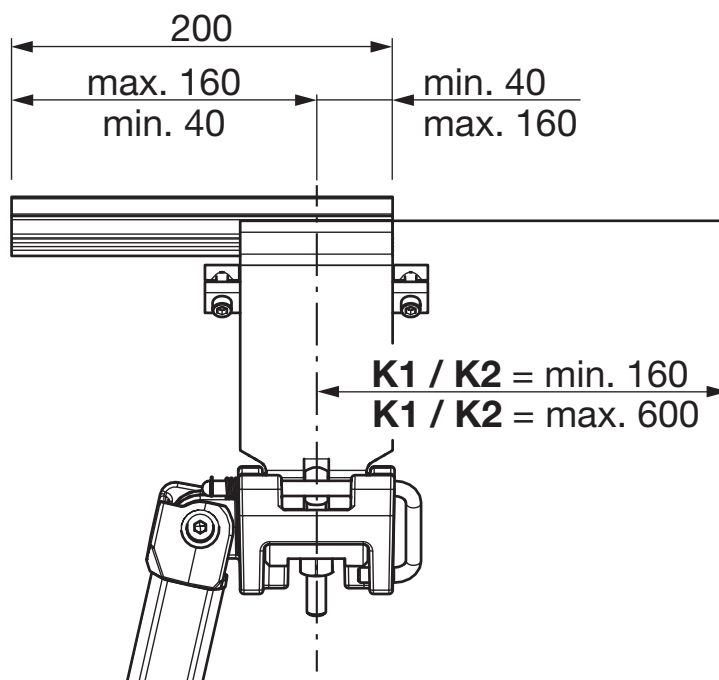
CAMABOX BX4000

Cassette awning with folding arms

Variant: Brackets - arm supports

CAUTION:

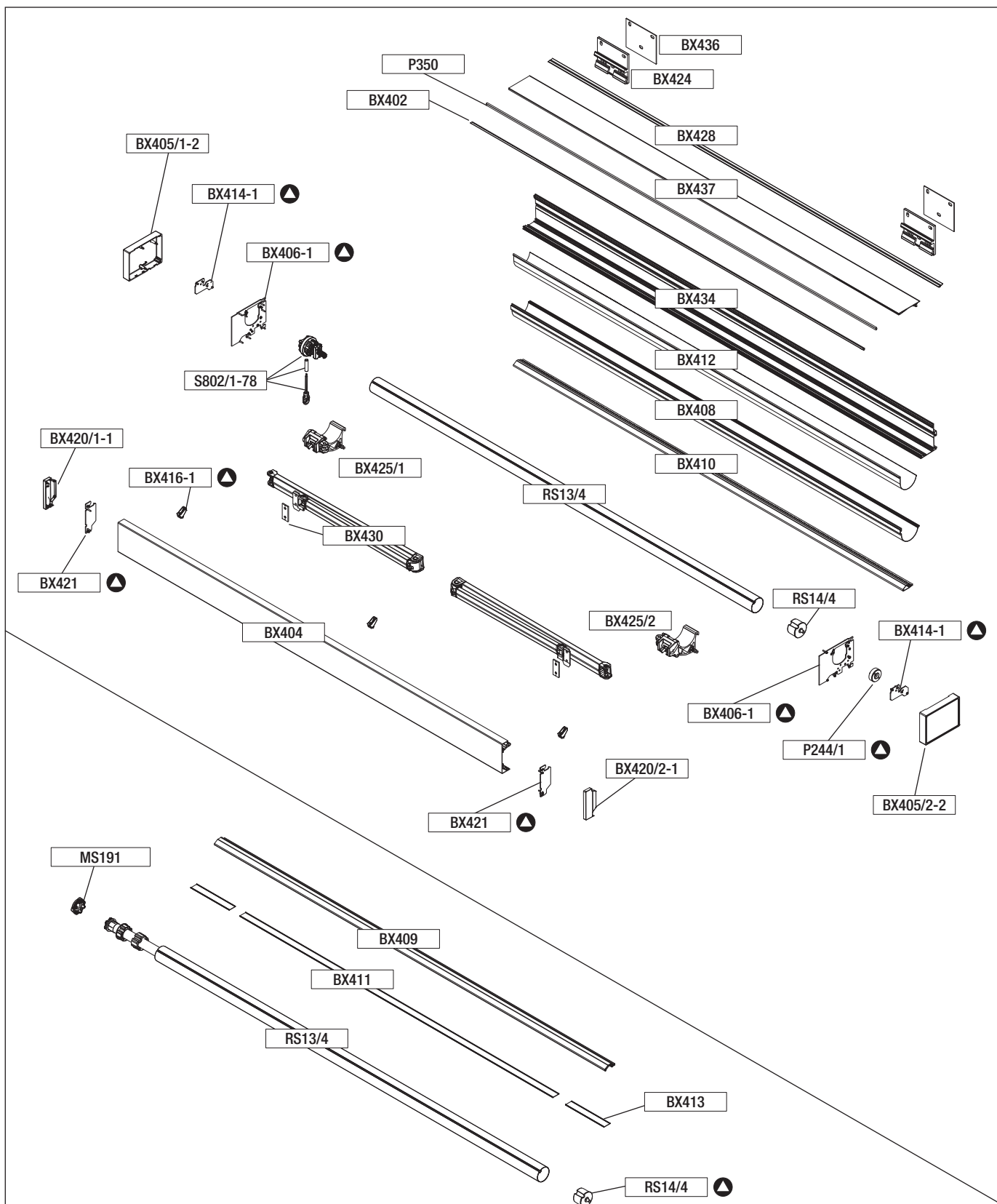
The brackets must always be installed behind an arm support.



CAMABOX BX4000

Cassette awning with folding arms

Exploded view



Garnitur / Garniture / Kit / Set / Garnituur:

▲ = BX4010-1

BX4000

CAMABOX BX4000

Cassette awning with folding arms

Components list

BX4010	BX406-1 BX414-1 BX416-1 BX421 P244/1	CAMABOX fitting Comprising 2 side plates, large 2 drive mountings 3 entry guide sets 2 side plates, small 1 counter bearing		pc.
BX402		Hollow chamber seal		pc.
BX404		Front rail		pc.
BX405/1-2 BX405/2-2	left right	Side cover, large		pc. pc.
BX408		Door panel		pc.
BX409		Lighting strip		pc.
BX410		End strip		pc.
BX411	to BX409	Light panel		pc.
BX412		Guide shell		pc.
BX413	to BX409	Blank strip		pc.
BX417	to BX403	Cover profile (optional for ceiling and rafter mounting)		pc.
BX420-1	to BX404 BX420/1-1 BX420/2-1	Side cover, pair, small		pc.
BX424		Wall bracket		pc.
BX425/1 BX425/2	left right	Tilt joint		pc. pc.
BX426		Ceiling bracket		pc.
BX427		Rafter bracket		pc.
BX428		Wall connector profile	50 m	lm pc.
BX430		Folding arm, pair	150 cm 200 cm 250 cm 300 cm	pc. pc. pc. pc.
BX434		Box profile		pc.
BX436		Spacer sheet		pc.
BX437		Roof profile		pc.
P350	to BX407-1	Strip brush		lm
RS13/4		Roller tube 78 mm		pc.
RS14/4		Bearing pin, 78 mm round without edge		pc.
S802/1-78 S802/2-78	left right	Gear unit fittings	With lighting not possible	pc. pc.

CAMABOX BX4000

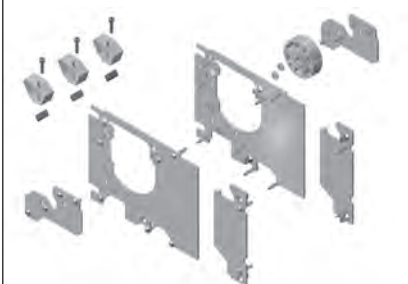
Cassette awning with folding arms

S804		Crank handle	80 cm 100 cm 120 cm 135 cm 150 cm 160 cm 180 cm 200 cm	pc. pc. pc. pc. pc. pc. pc. pc.
ECL4106	LED white	LED tunable white electrical unit CAMABOX without radio motor WT	150W Dali SLT	pc.
ECL4304	LED white	LED tunable white electrical unit CAMABOX with radio motor io	150W io SLT	pc.
EZ6090	LED white	Electric unit fitting without radio		pc.
EZ6091	LED white	Electric unit fitting, radio		pc.
SLT115/TE SLT120/TE SLT125/TE SLT130/TE SLT135/TE SLT140/TE SLT145/TE SLT150/TE SLT155/TE		SLT100, LED-Stripe Tunable white (2700–5000 K) including 320 cm cable and TE plug	150 cm 200 cm 250 cm 300 cm 350 cm 400 cm 450 cm 500 cm 550 cm	pc. pc. pc. pc. pc. pc. pc. pc. pc.
MS191		Motor bearing		pc.

CAMABOX BX4000

Cassette awning with folding arms

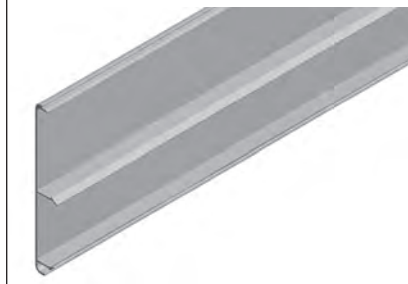
BX4010-1



BX409



BX417



BX402



BX410



BX420-1



BX404



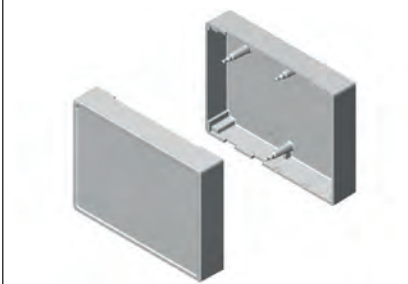
BX411



BX424



BX405/1-2 / BX405/2-2



BX412



BX425/1 / BX425/2



BX408



BX413



BX426



CAMABOX BX4000

Cassette awning with folding arms

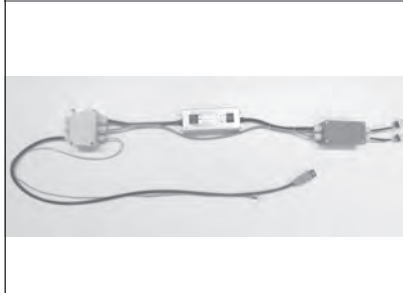
BX427



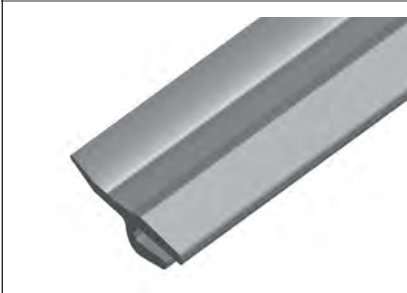
BX437



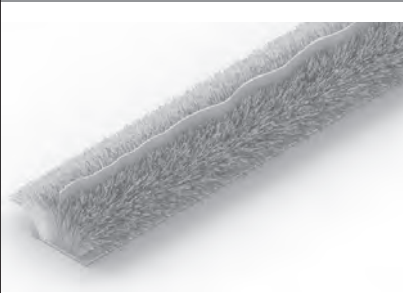
ECL4106



BX428



P350



ECL4304



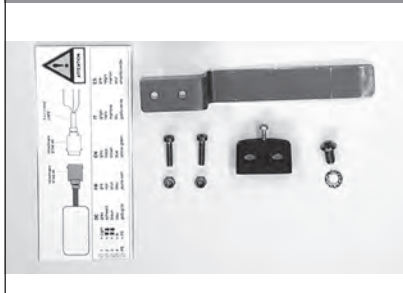
BX430



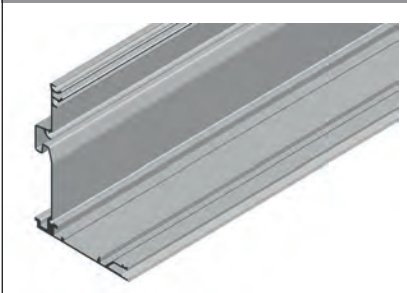
RS13/4



EZ6090 / EZ6091



BX434



RS14/4



SLT115/TE - SLT155/TE



BX436



S802/1-78 / S802/2-78



MS191

